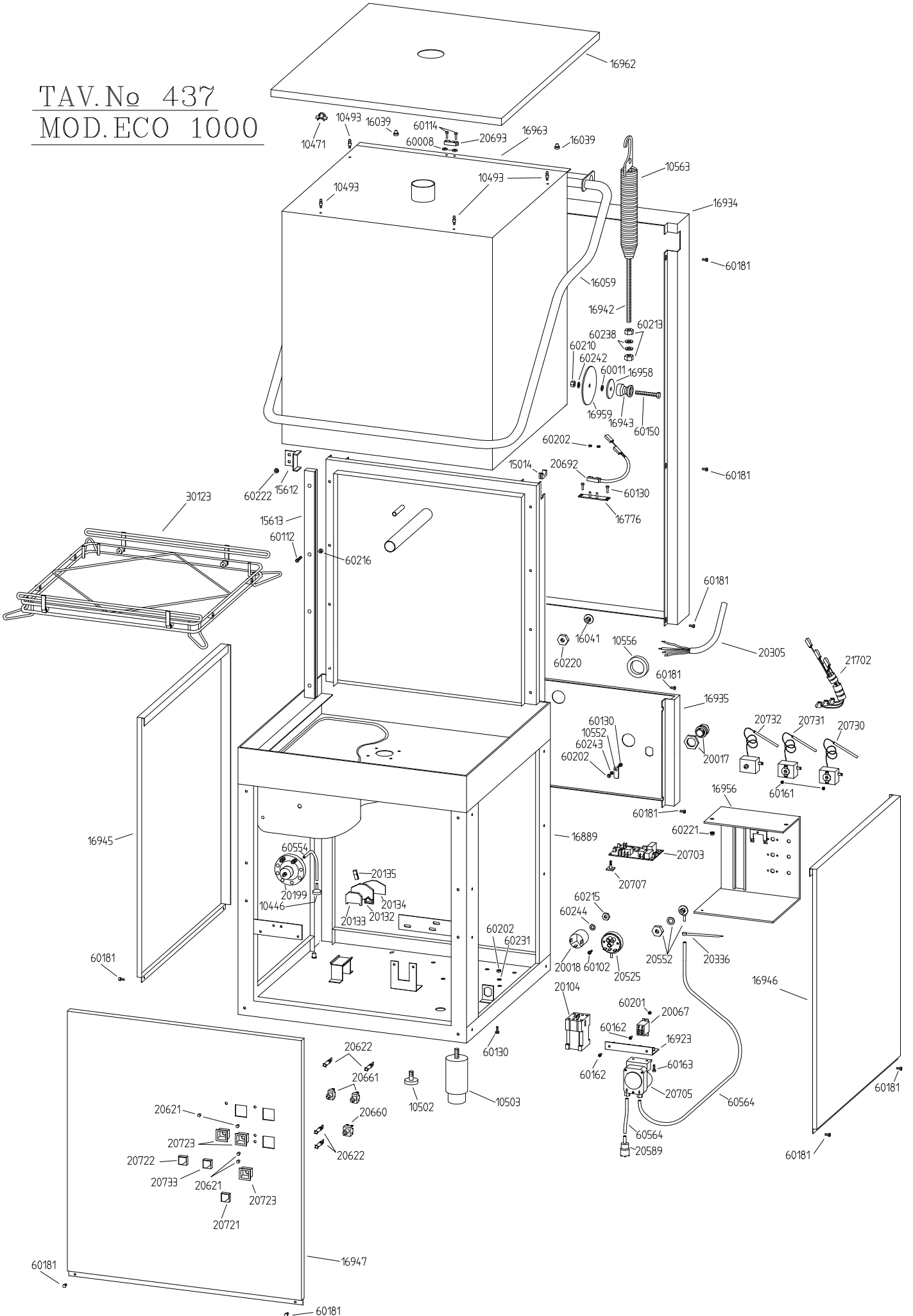
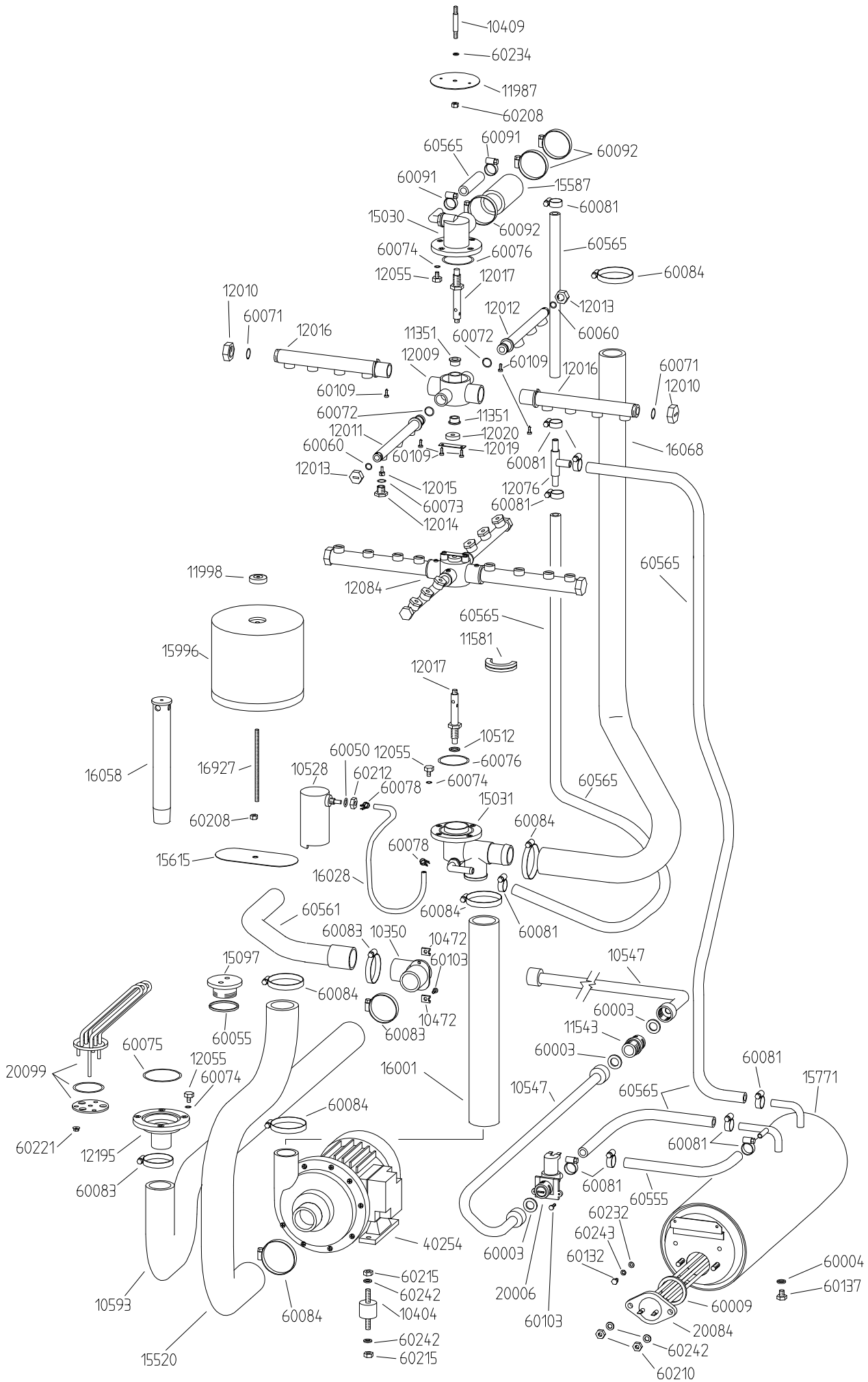
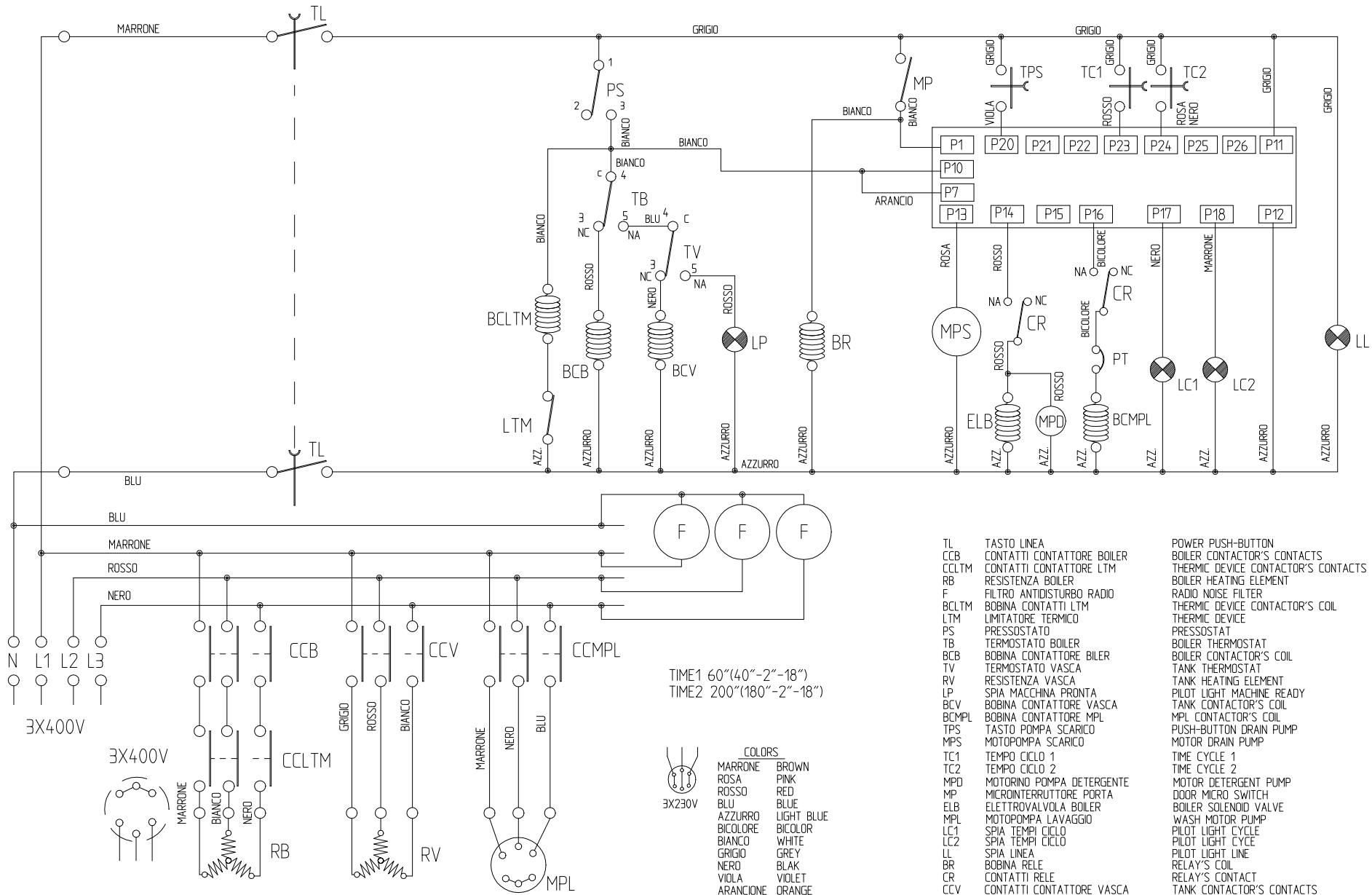


TAV.No 437
 MOD.ECO 1000



TAV. No 438 MOD. ECO 1000





- | | | |
|-------|----------------------------|-------------------------------------|
| TL | TASTO LINEA | POWER PUSH-BUTTON |
| CCB | CONTATTI CONTATTORE BOILER | BOILER CONTACTOR'S CONTACTS |
| CCLTM | CONTATTI CONTATTORE LTM | THERMIC DEVICE CONTACTOR'S CONTACTS |
| RB | RESISTENZA BOILER | BOILER HEATING ELEMENT |
| F | FILTRO ANTIDISTURBO RADIO | RADIO NOISE FILTER |
| BCLTM | BOBINA CONTATTI LTM | THERMIC DEVICE CONTACTOR'S COIL |
| LTM | LIMITATORE TERMICO | THERMIC DEVICE |
| PS | PRESSOSTATO | PRESSOSTAT |
| TB | TERMOSTATO BOILER | BOILER THERMOSTAT |
| BCB | BOBINA CONTATTORE BILER | BOILER CONTACTOR'S COIL |
| TV | TERMOSTATO VASCA | TANK THERMOSTAT |
| RV | RESISTENZA VASCA | TANK HEATING ELEMENT |
| LP | SPIA MACCHINA PRONTA | PILOT LIGHT MACHINE READY |
| BCV | BOBINA CONTATTORE VASCA | TANK CONTACTOR'S COIL |
| BCMPL | BOBINA CONTATTORE MPL | MPL CONTACTOR'S COIL |
| TPS | TASTO POMPA SCARICO | PUSH-BUTTON DRAIN PUMP |
| MPS | MOTOPOMPA SCARICO | MOTOR DRAIN PUMP |
| TC1 | TEMPO CICLO 1 | TIME CYCLE 1 |
| TC2 | TEMPO CICLO 2 | TIME CYCLE 2 |
| MPD | MOTORINO POMPA DETERGENTE | MOTOR DETERGENT PUMP |
| MP | MICROINTERRUTTORE PORTA | DOOR MICRO SWITCH |
| ELB | ELETTROVALVOLA BOILER | BOILER SOLENOID VALVE |
| MPL | MOTOPOMPA LAVAGGIO | WASH MOTOR PUMP |
| LC1 | SPIA TEMPI CICLO | PILOT LIGHT CYCLE |
| LC2 | SPIA TEMPI CICLO | PILOT LIGHT CYCLE |
| LL | SPIA LINEA | PILOT LIGHT LINE |
| BR | BOBINA RELE | RELAY'S COIL |
| CR | CONTATTI RELE | RELAY'S CONTACT |
| CCV | CONTATTI CONTATTORE VASCA | TANK CONTACTOR'S CONTACTS |
| CCMPL | CONTATTI CONTATTORE MPL | MPL CONTACTOR'S CONTACTS |
| PT | PROTEETTORE TERMICO | THERMAL PROTECTOR |

- TIME1 60"(40"-2"-18")
TIME2 200"(180"-2"-18")
- COLORS:
MARRONE BROWN
ROSA PINK
ROSSO RED
BLU BLUE
AZZURRO LIGHT BLUE
BICOLORE BICOLOR
BIANCO WHITE
GRIGIO GREY
NERO BLACK
VIOLA VIOLET
ARANCIONE ORANGE

THE ELECTRICAL DIAGRAM IS REPRESENTED BY FULLY OPTIONALS EQUIPPED.

Lo schema rappresenta la macchina nella sua versione più complessa sui modelli derivati più semplici mancheranno alcuni componenti con le relative connessioni.

THERMOSTOP NON COLLEGATO THERMOSTOP DISCONNECTED

SCHEMA ELETTRICO ECO 1000-ECO 1000 DP